

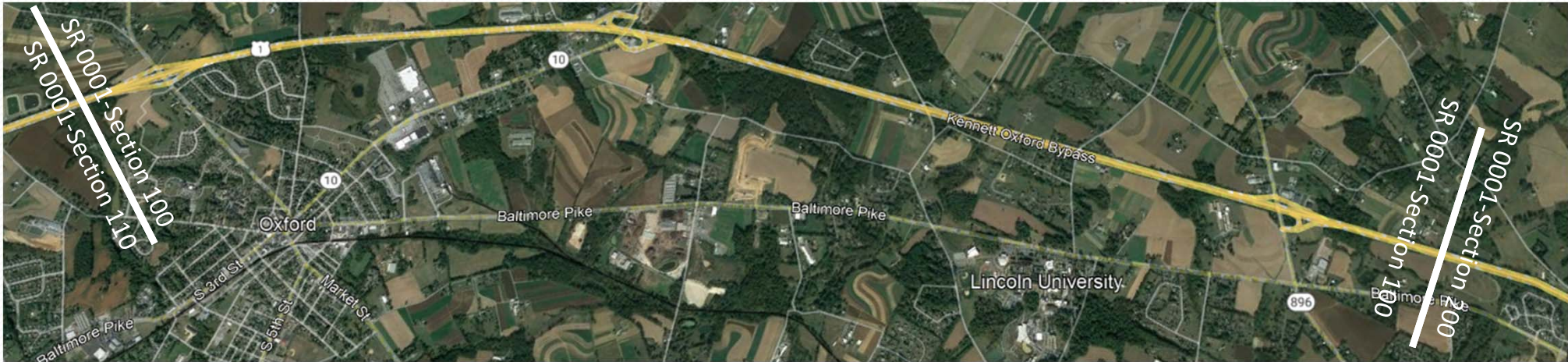
US Route 1 Bypass Reconstruction

TMACC Meeting – October 2022

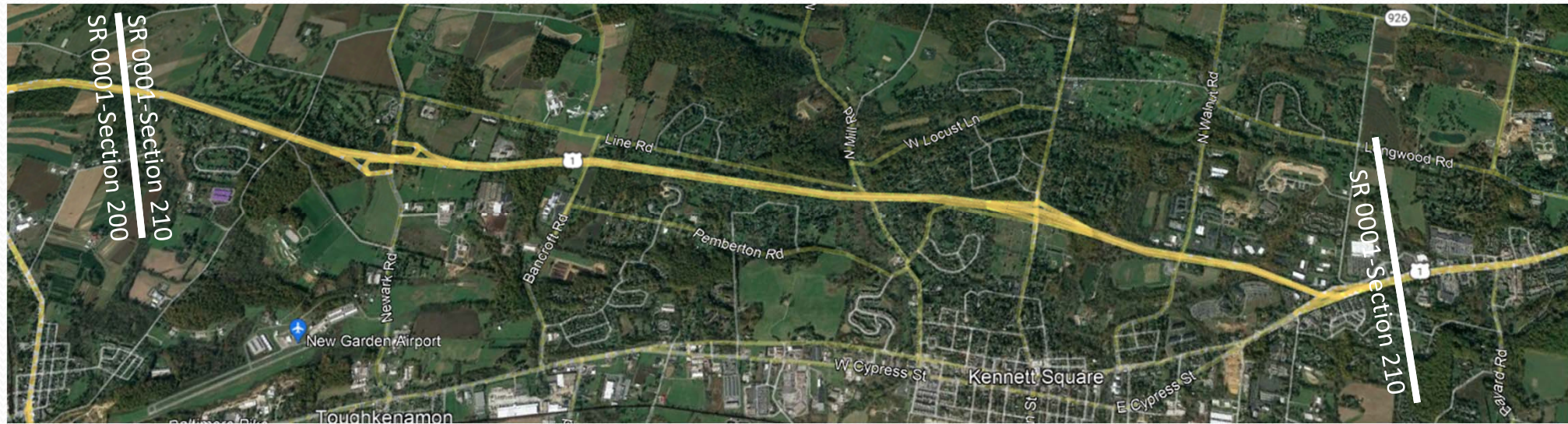
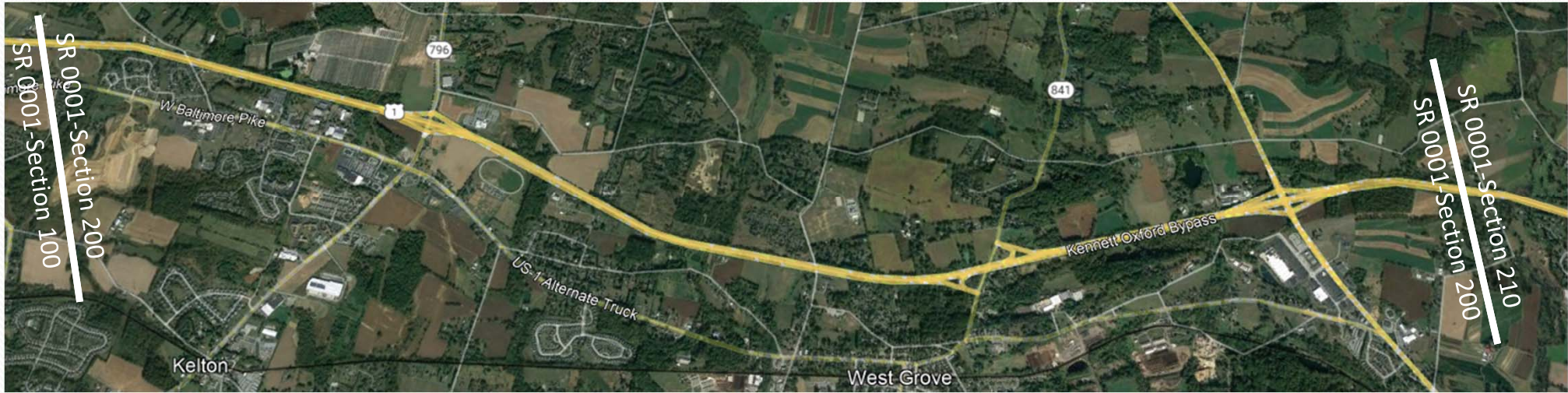


pennsylvania
DEPARTMENT OF TRANSPORTATION

Overview Map (Sections 110 & 100)

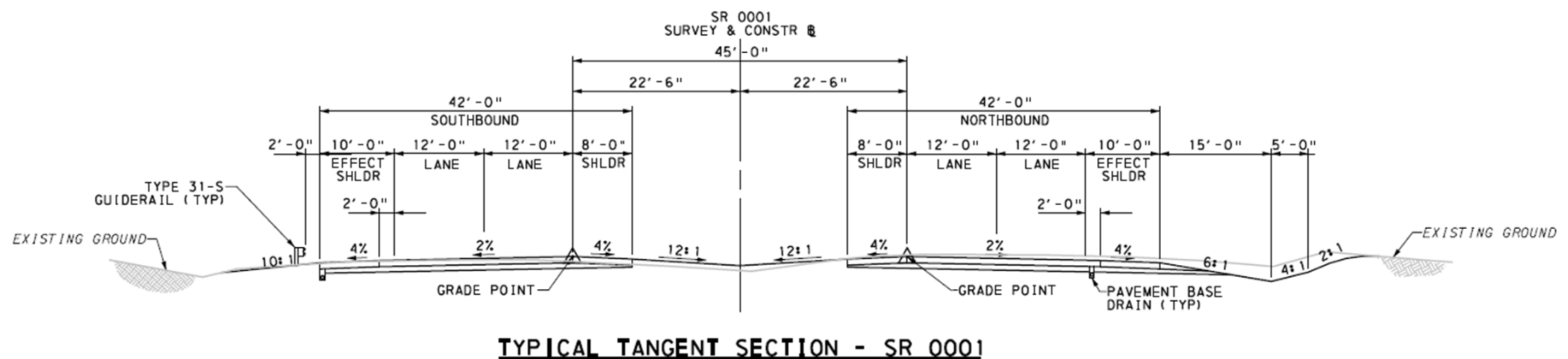


Overview Map (Sections 200 & 210)



Mainline Improvements

- 4 – 12' lanes, 10-12' outside shoulders, 8'-10' effective inside shoulders
- Interchange reconfiguration where warranted, including construction of appropriate acceleration and deceleration lanes.
- Safety upgrades including mash compliant roadside barriers
- Dynamic Message Sign (DMS) and CCTV
- Drainage and stormwater upgrades
- Achieving 16.5' minimum vertical clearance on mainline



Structure Improvements

- 18 Overpass Bridges, 16 Mainline Bridges, 8 Culverts
- 8 Structure Replacements
- 20 Superstructure Replacement
- 8 Culvert Extensions/Rehabs
- 6 Structure Rehabilitations
- Reprofilng of SR 1 to obtain 16.5' minimum clearance



Intersection Improvements

Sylmar Road Intersection

- Proposed SR 0001 Realignment – One through lane movement, reduces crossover traffic width for Sylmar Rd vehicles
- Sylmar Rd – Match existing two-way stop control



Intersection Improvements

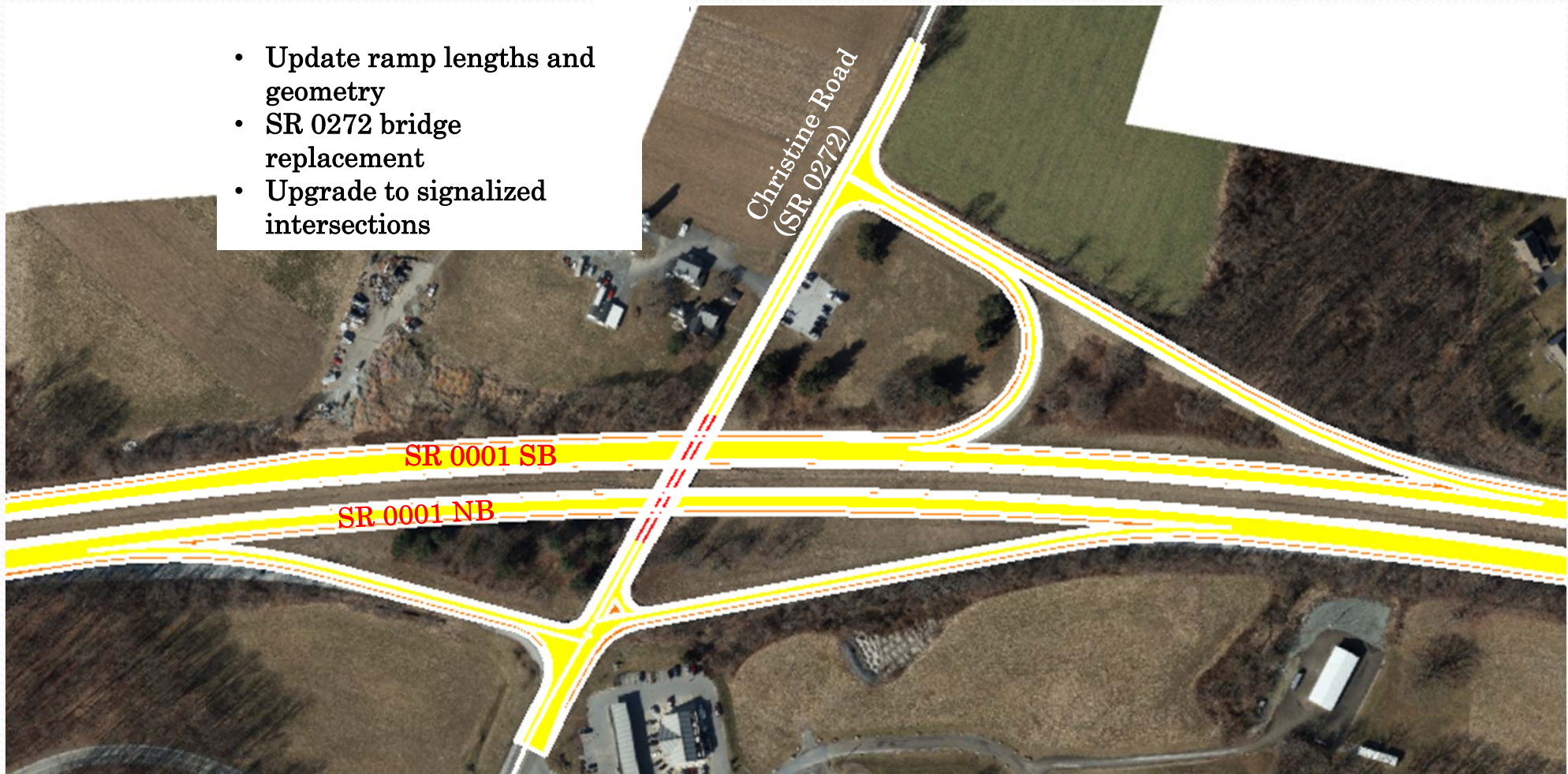
Ridge Road Intersection



Interchange Improvements

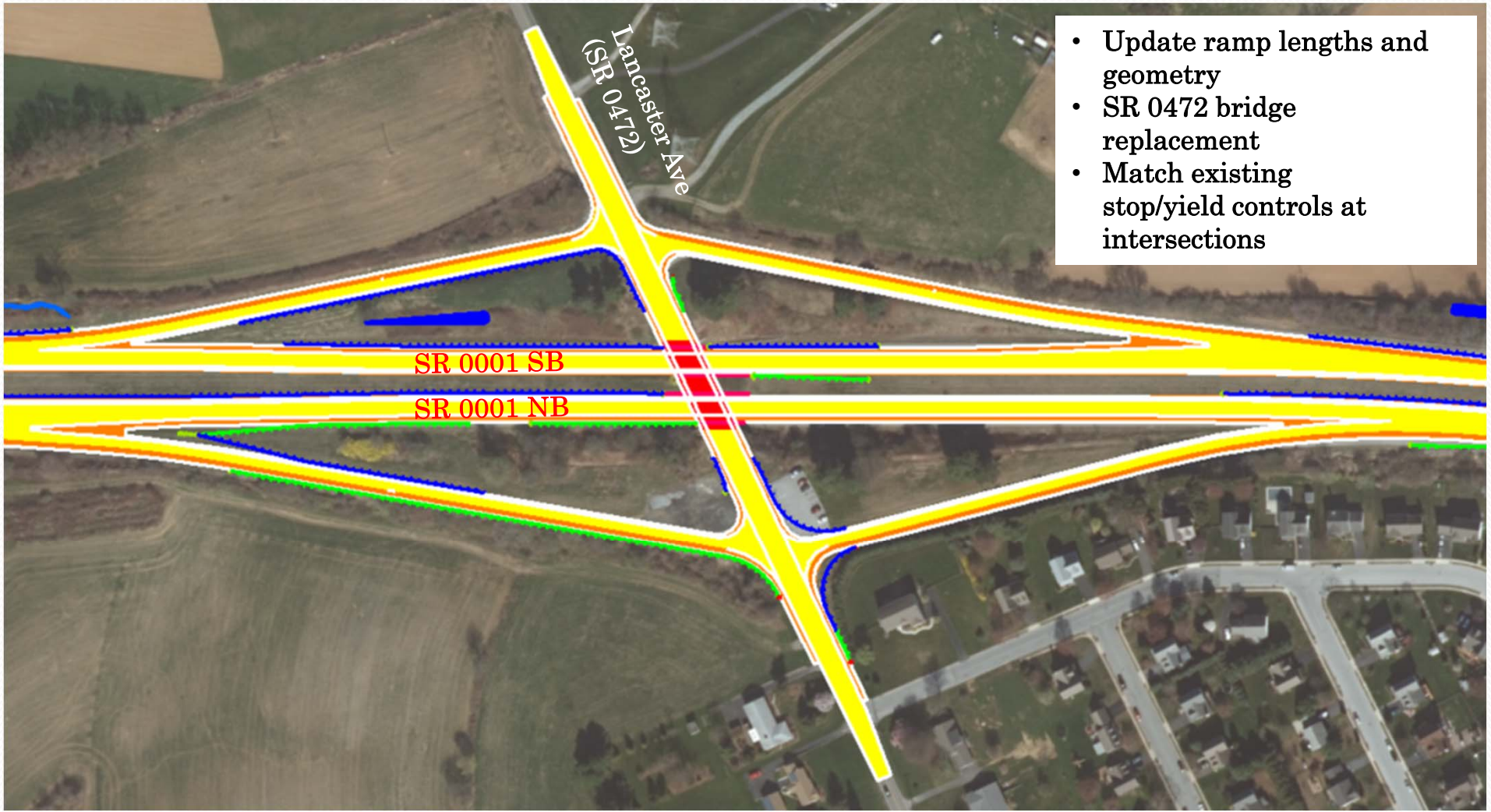
Christine Road Interchange

- Update ramp lengths and geometry
- SR 0272 bridge replacement
- Upgrade to signalized intersections



Interchange Improvements

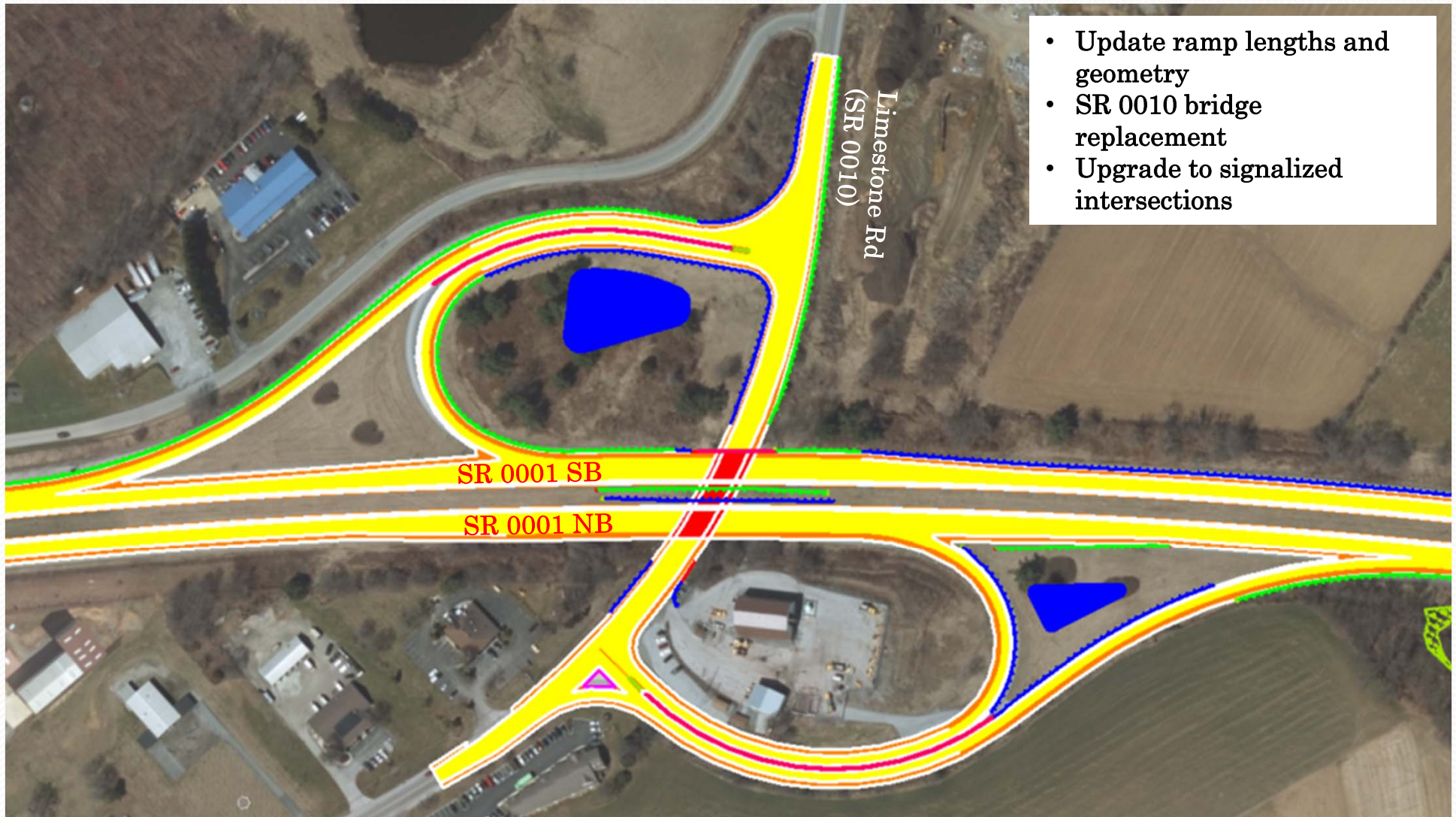
Lancaster Avenue Interchange



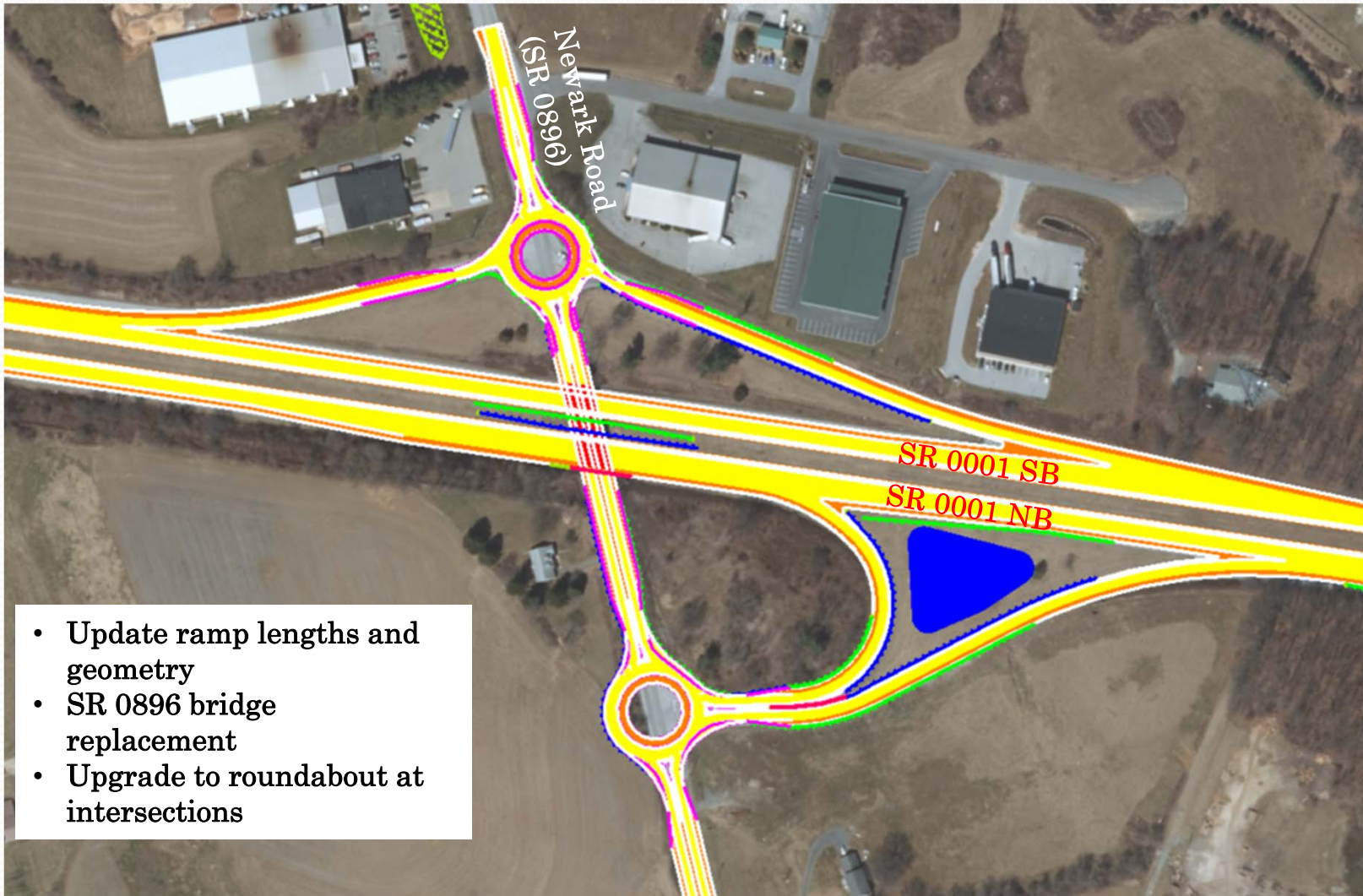
- Update ramp lengths and geometry
- SR 0472 bridge replacement
- Match existing stop/yield controls at intersections

Interchange Improvements

Limestone Road Interchange



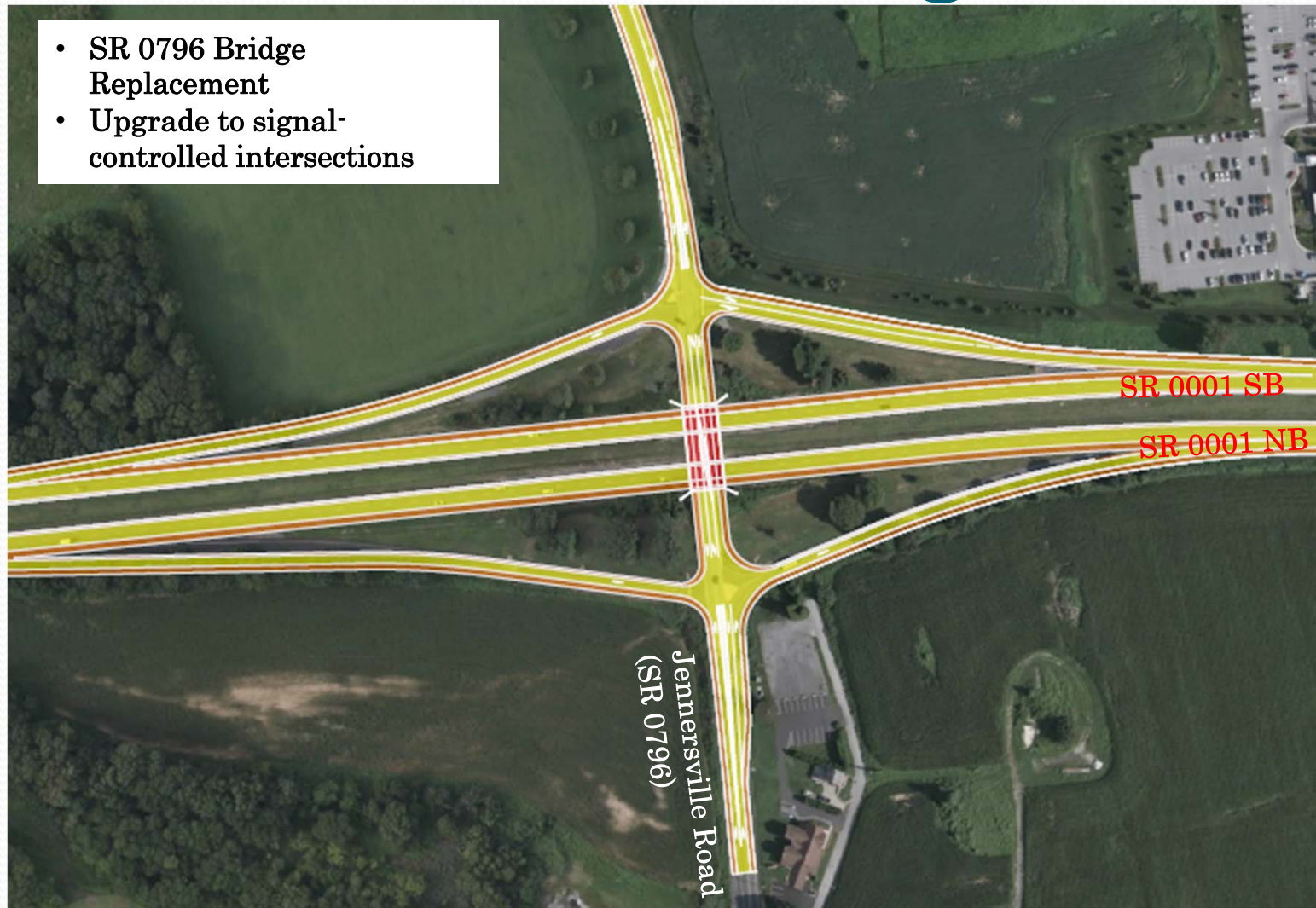
Intersection Improvements Newark Road Interchange



Interchange Improvements

Jennersville Road Interchange

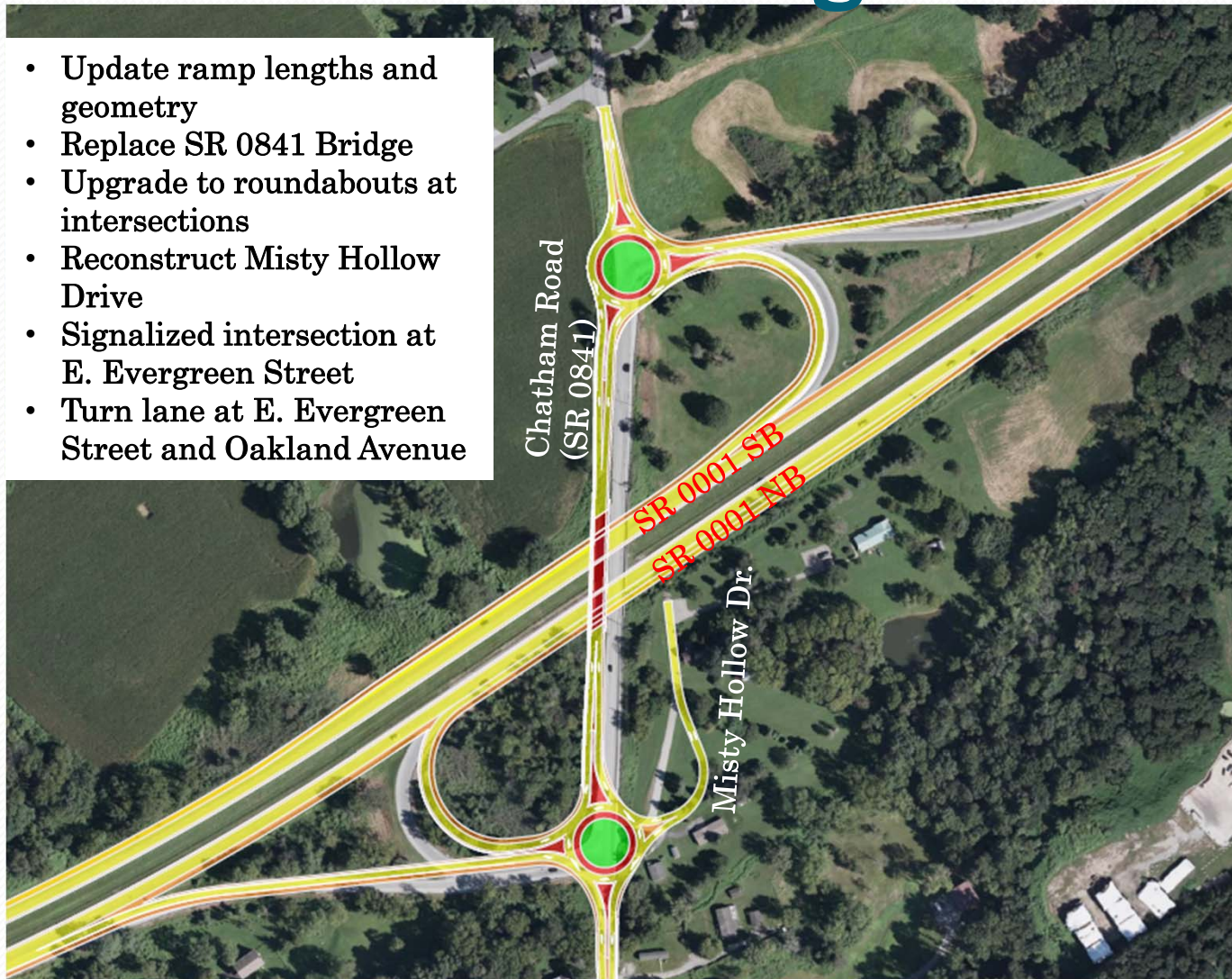
- SR 0796 Bridge Replacement
- Upgrade to signal-controlled intersections



Interchange Improvements

Chatham Road Interchange

- Update ramp lengths and geometry
- Replace SR 0841 Bridge
- Upgrade to roundabouts at intersections
- Reconstruct Misty Hollow Drive
- Signalized intersection at E. Evergreen Street
- Turn lane at E. Evergreen Street and Oakland Avenue



Interchange Improvements

Gap Newport Pike Interchange

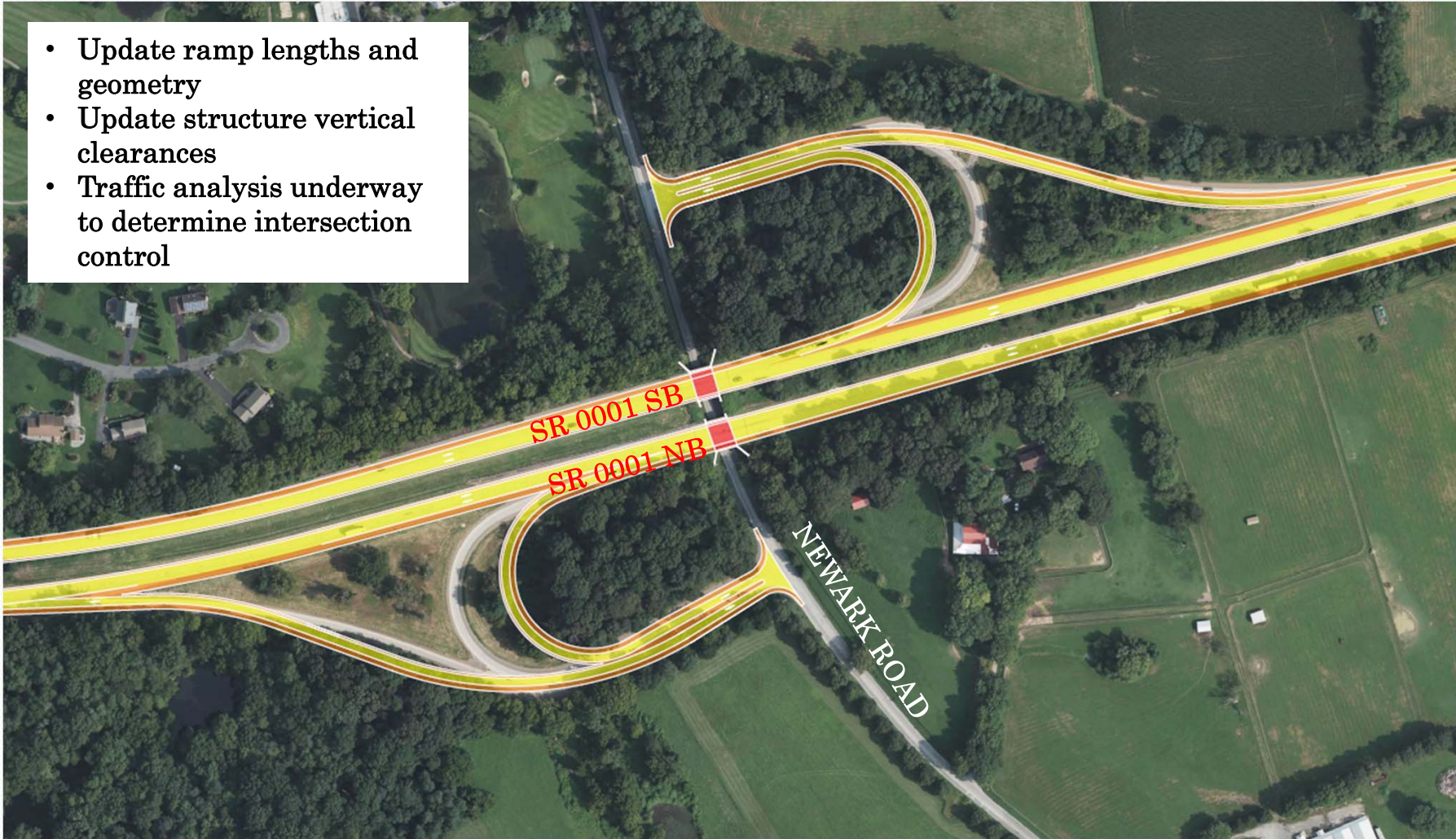


- Update ramp lengths and geometry
- Replace SR 0041 Bridge
- Upgrade to hybrid roundabouts at intersections
- Added turn lanes

Interchange Improvements

Newark Road Interchange

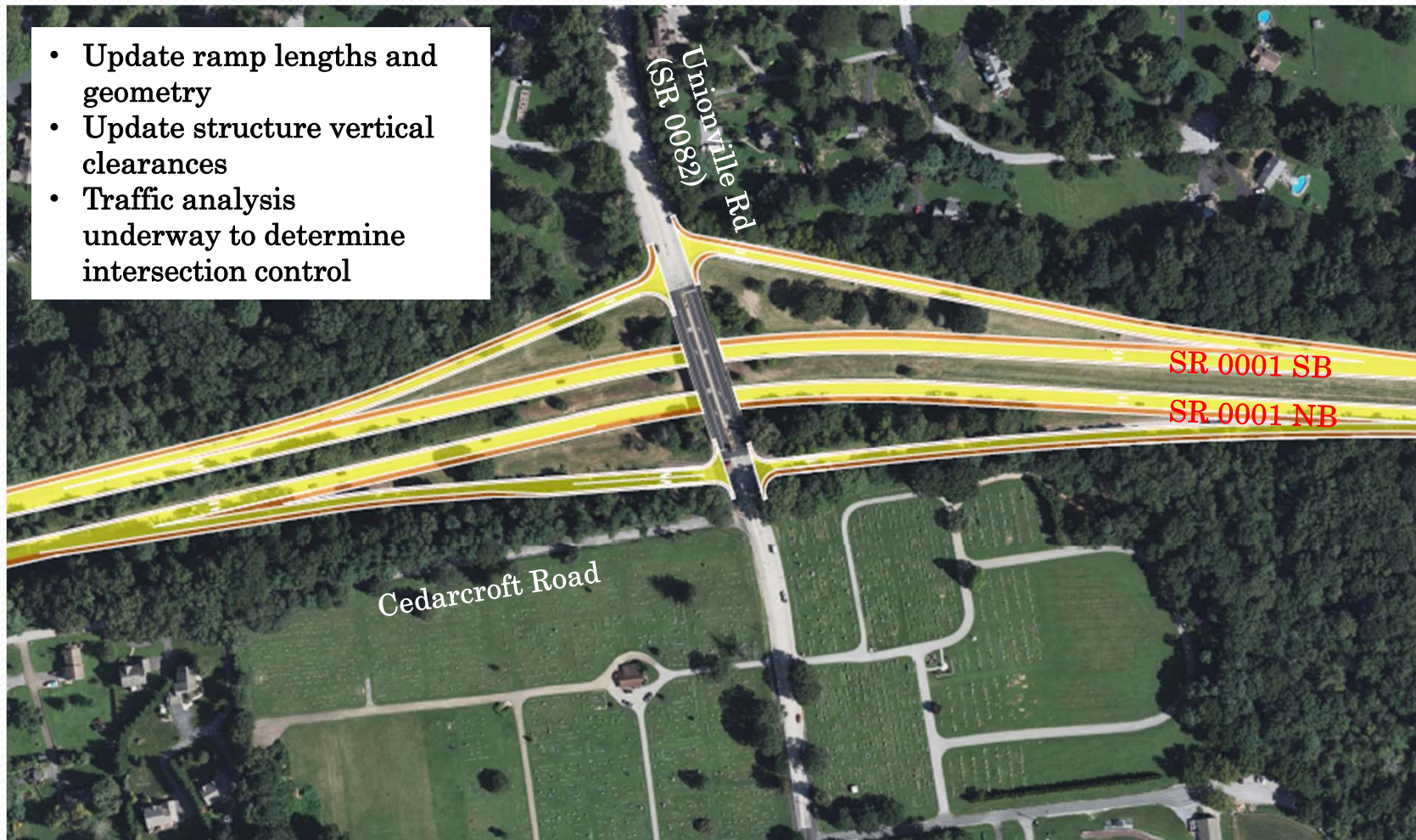
- Update ramp lengths and geometry
- Update structure vertical clearances
- Traffic analysis underway to determine intersection control



Interchange Improvements

Unionville Road Interchange

- Update ramp lengths and geometry
- Update structure vertical clearances
- Traffic analysis underway to determine intersection control



Interchange Improvements

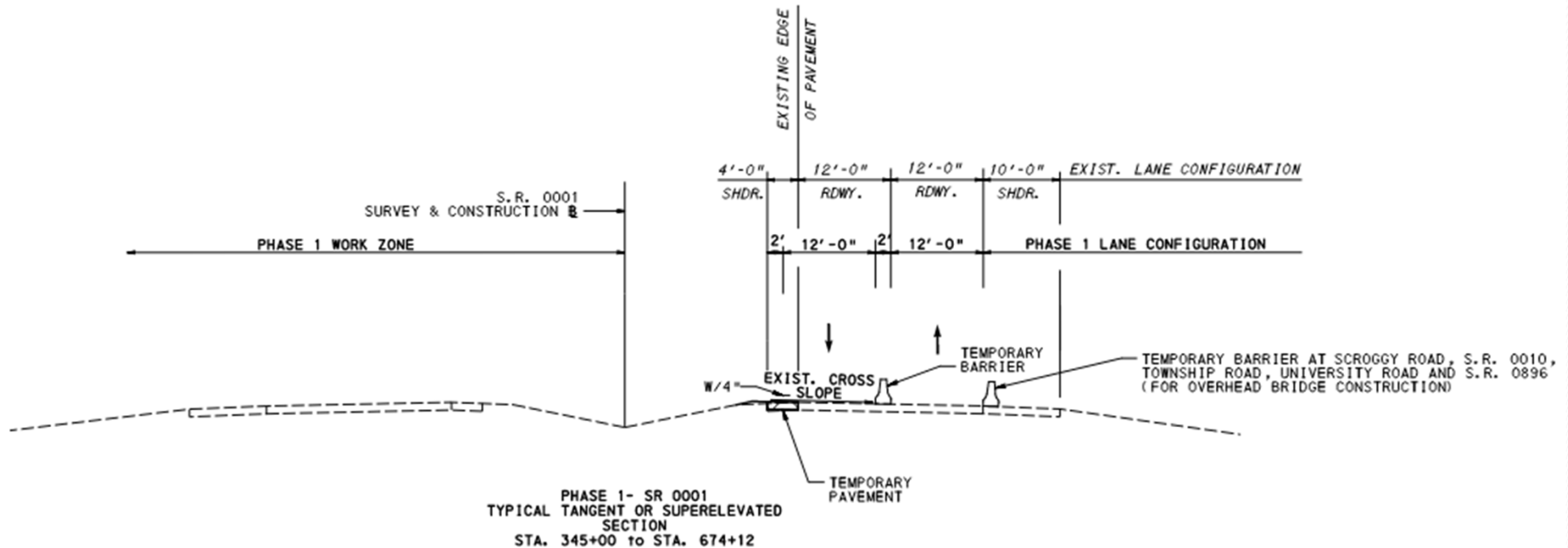
Baltimore Pike Interchange

- Replace Baltimore Pike Bridge
- Improve horizontal geometry/sight distance



Traffic Control

- Utilizes crossovers between NB & SB traffic during construction Phases 1 & 2
- Short-term ramp closures/detours are anticipated during construction
- One lane each direction will be maintained at all times




Chester County Trail Coordination

- Southern Chester County Circuit Trail Feasibility Study - 2021

Recommended Projects

 Baltimore Pike Bikeway

 Multi-use trails along US 1 Expressway

- Schoolhouse Road to Bancroft Road
- Maryland Line to PA-472
- Oxford Connector Trail - PA-472

Circuit connection options

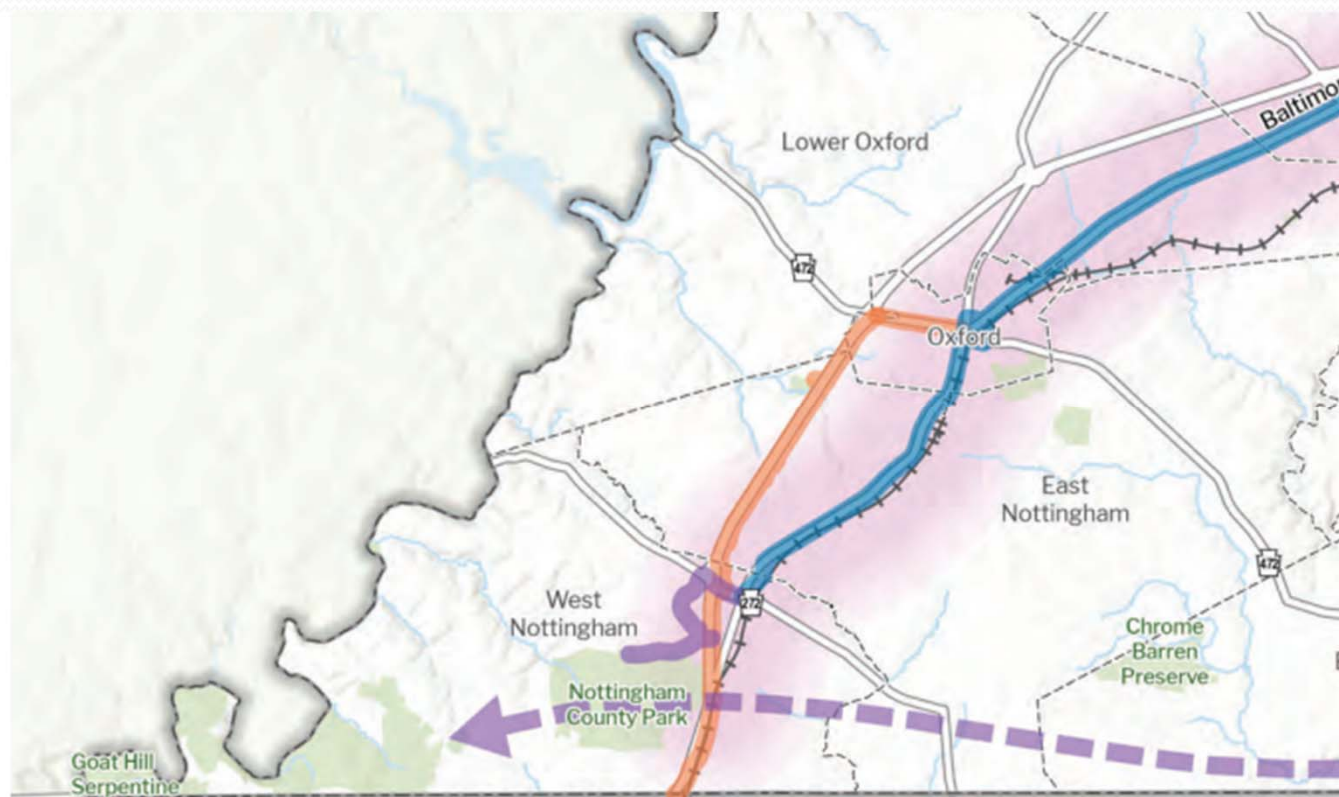
-  • Bennett's Run Trail
-  • Railroad Trail

Other trail projects

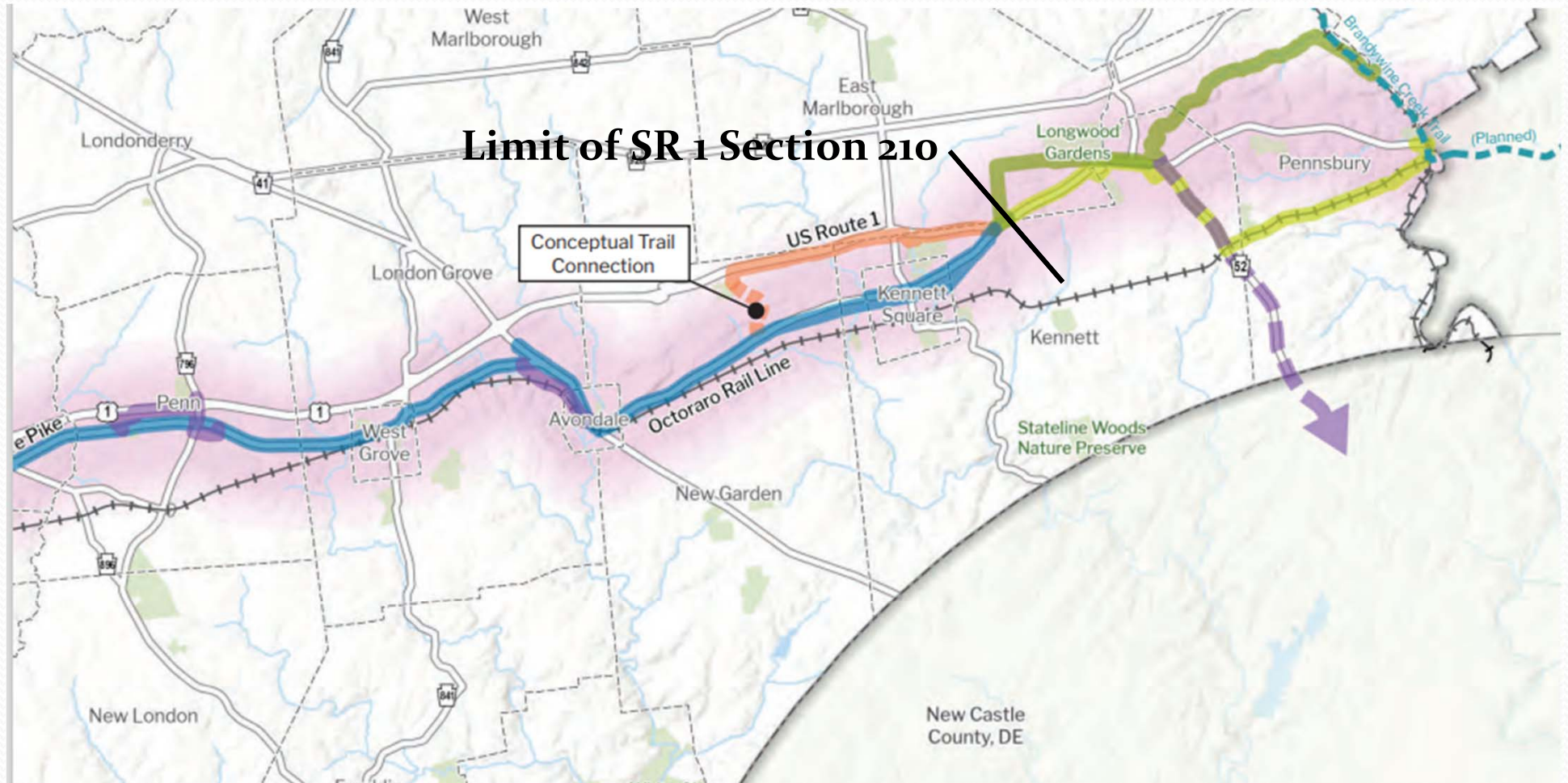
- Avondale Nature Trail
- Jennersville Loop Trail
- Nottingham Park Connector Trail

Other trail projects (conceptual)

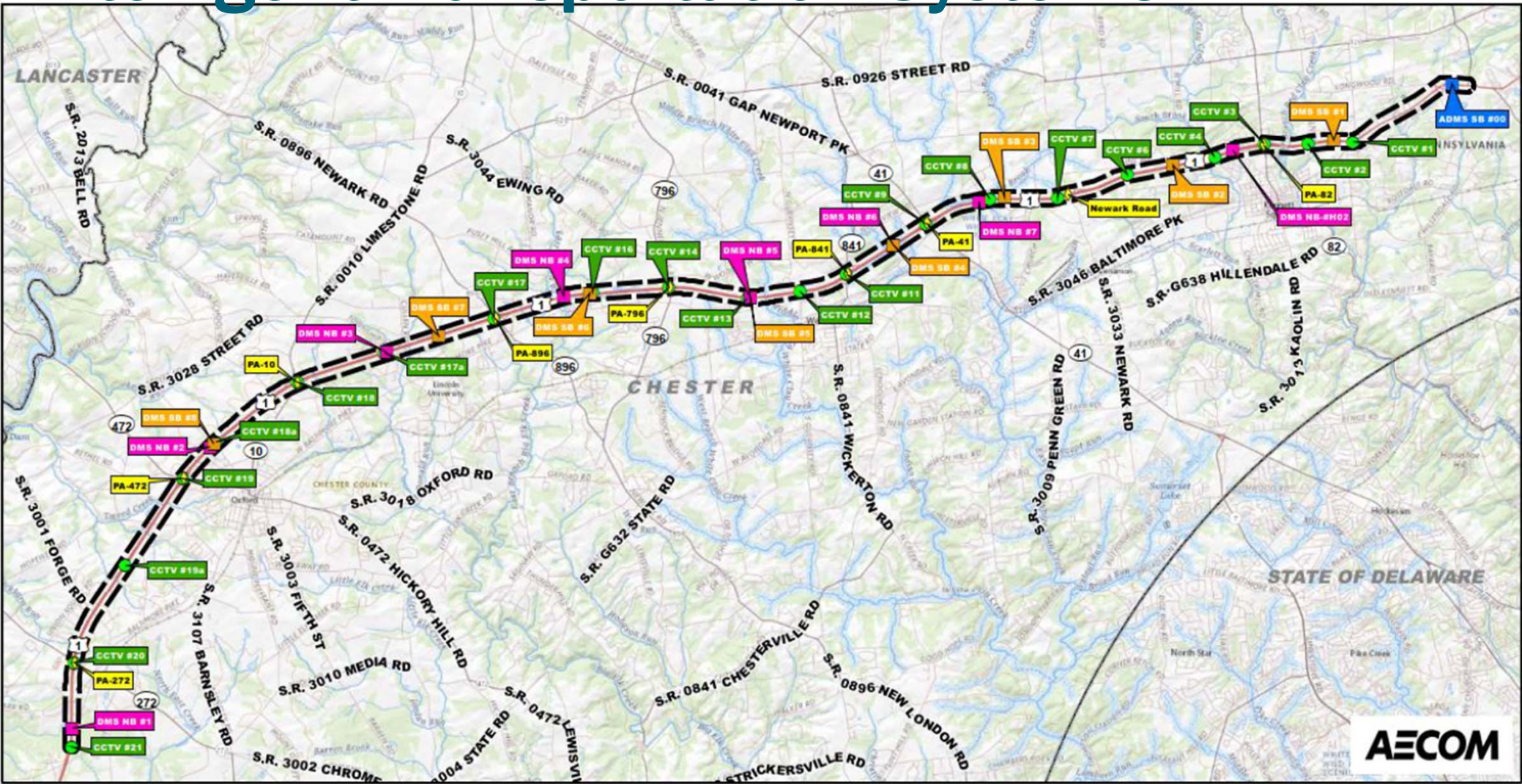
- Harriet Tubman Underground Railroad Byway and Pilgrimage Route
- Serpentine Trail



Chester County Trail Coordination



Intelligent Transportation Systems

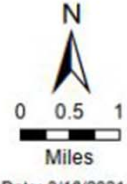


AECOM

**US1 Kennett-Oxford Bypass -
Systems Engineering Report
Chester County, PA
ITS Device Locations**

- CCTV New
- NB DMS New
- SB DMS New
- SB ADMS New
- ◆ Interchange
- Study Area

Source: USGS The National Map: National Boundaries Dataset, 3DEP Elevation Program, Geographic Names Information System, National Hydrography Dataset, National Land Cover Database, National Structures Dataset, and National Transportation Dataset; USGS Global Ecosystems, U.S. Census Bureau TIGER/Line data; USFS Road Data, Natural Earth Data; U.S. Department of State Humanitarian Information Unit; and NOAA National Centers for Environmental Information, U.S. Coastal Relief Model. Data refreshed May, 2020.



Date: 3/16/2021

Anticipated Construction Schedule

- **Section 100 MPMS 14580 – Construction Start Summer 2025**
- **Section 200 MPMS 14581 – Construction Start Spring 2027**
- **Section 110 MPMS 113307 – Construction Start Fall 2027**
- **Section 210 MPMS 113312 – Construction Start Spring 2028**