

US 1, Section H02

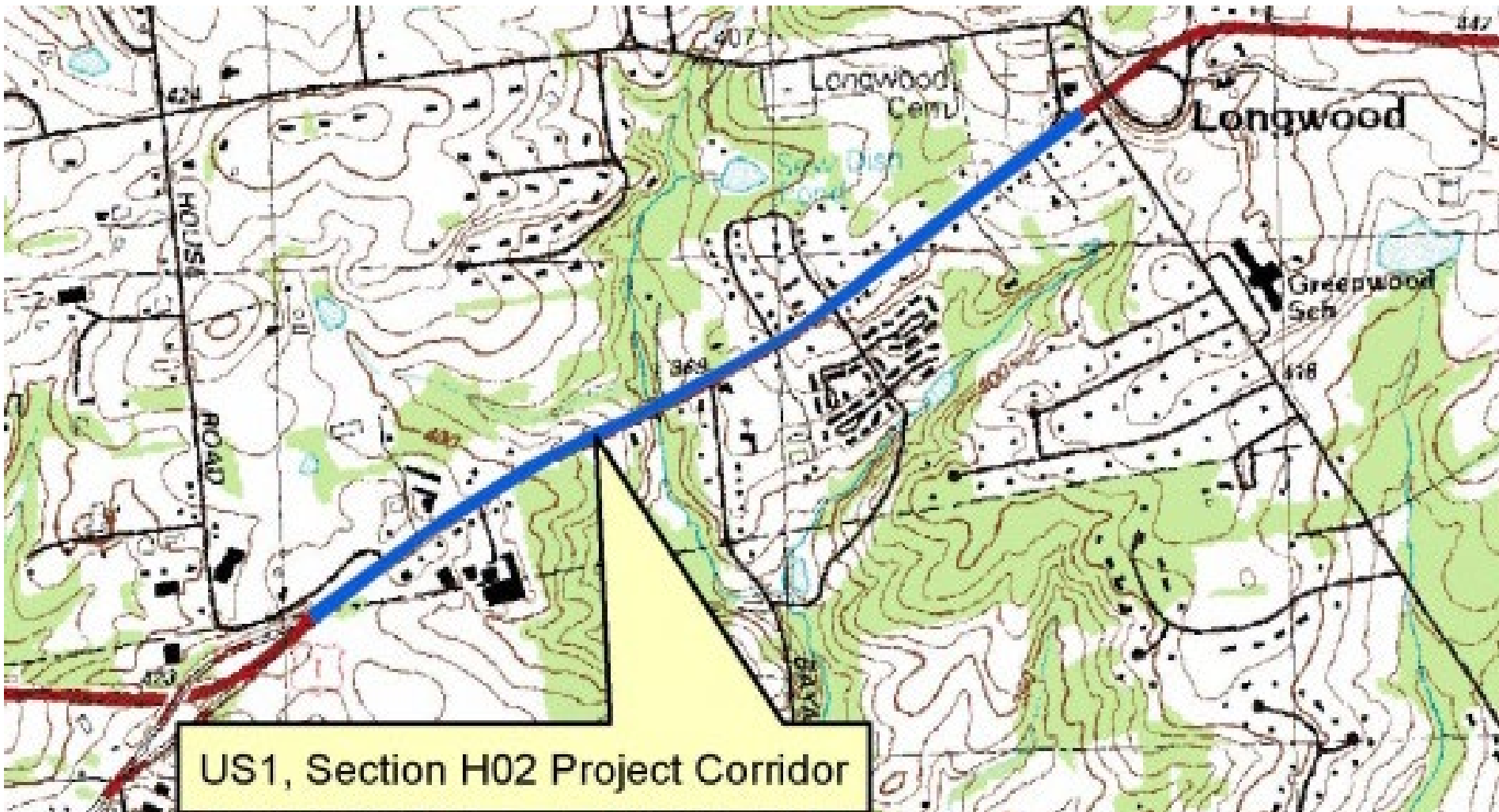
Presentation to TMACC

October 6, 2022

by

Francis J. Eells, PE

US 1, Section H02



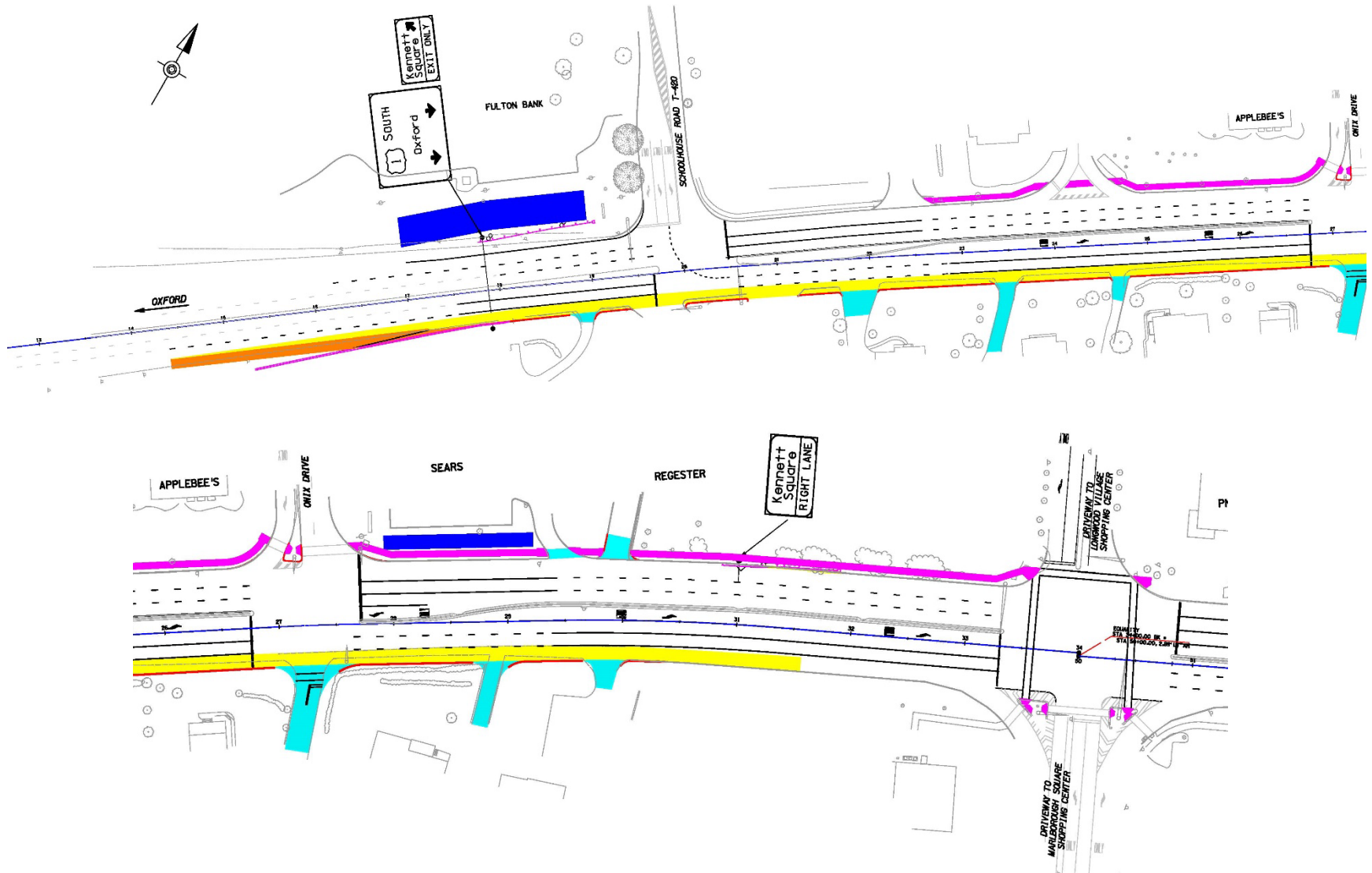
US 1, Section H02

- **Widen US 1 to three lanes throughout corridor from Longwood Overpass to Kennett Bypass split**
- **Add sidewalk along North side of US 1 from Schoolhouse Lane to Shopping Center signal**
- **Widen Bayard Road at CVS to allow for truck turns.**
- **Prohibit Left Turns from Orchard Ave**
- **Signal Modifications within corridor**

US 1, Section H02

- **Widen US 1 to three lanes throughout corridor from Longwood Overpass to Kennett Bypass split**
- **Add sidewalk along North side of US 1 from Schoolhouse Lane to Shopping Center signal**
- Widen Bayard Road at CVS to allow for truck turns.
- Prohibit Left Turns from Orchard Ave
- Signal Modifications within corridor

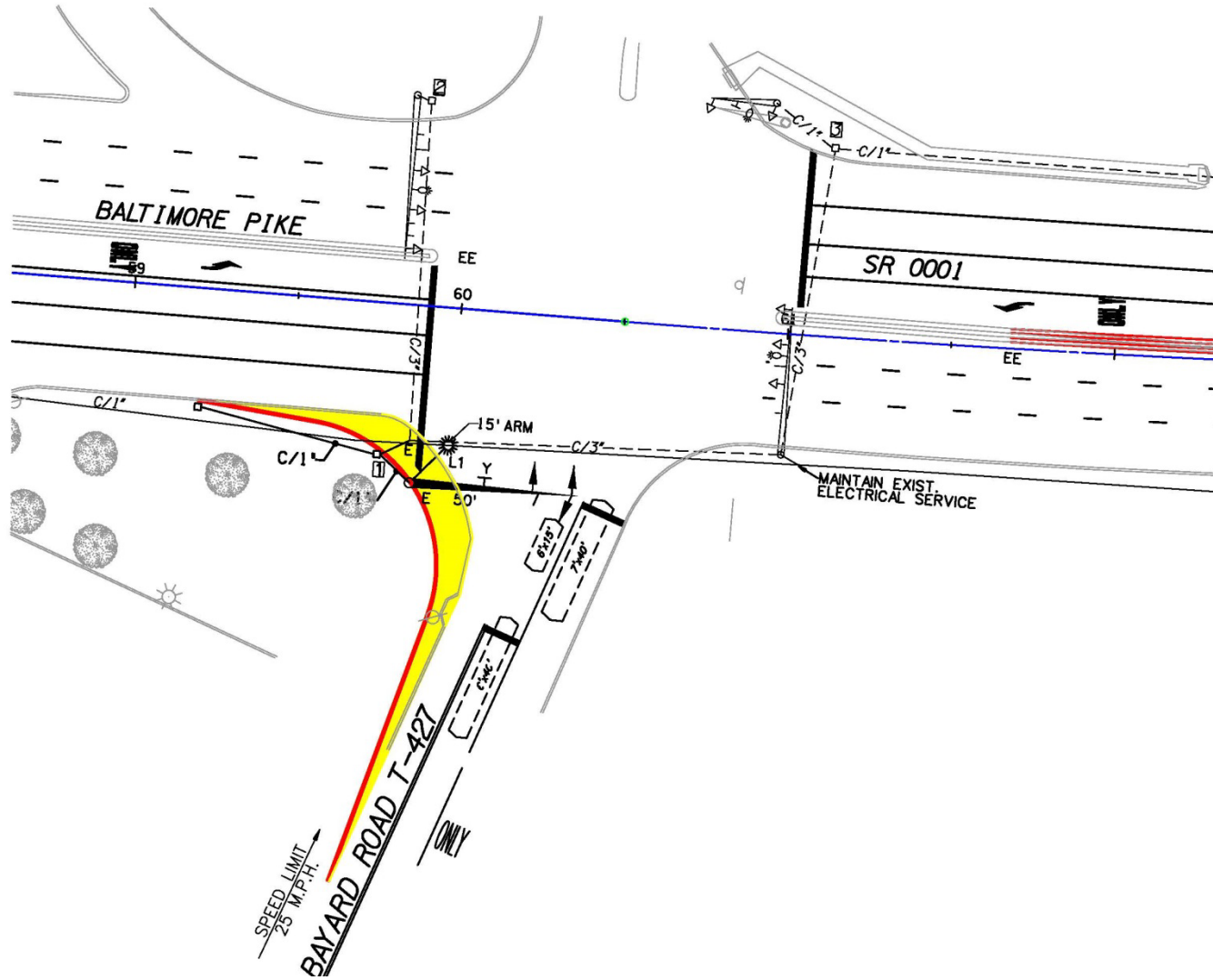
US 1, Section H02



US 1, Section H02

- Widen US 1 to three lanes throughout corridor from Longwood Overpass to Kennett Bypass split
- Add sidewalk along North side of US 1 from Schoolhouse Lane to Shopping Center signal
- **Widen Bayard Road at CVS to allow for truck turns.**
- Prohibit Left Turns from Orchard Ave
- Signal Modifications within corridor

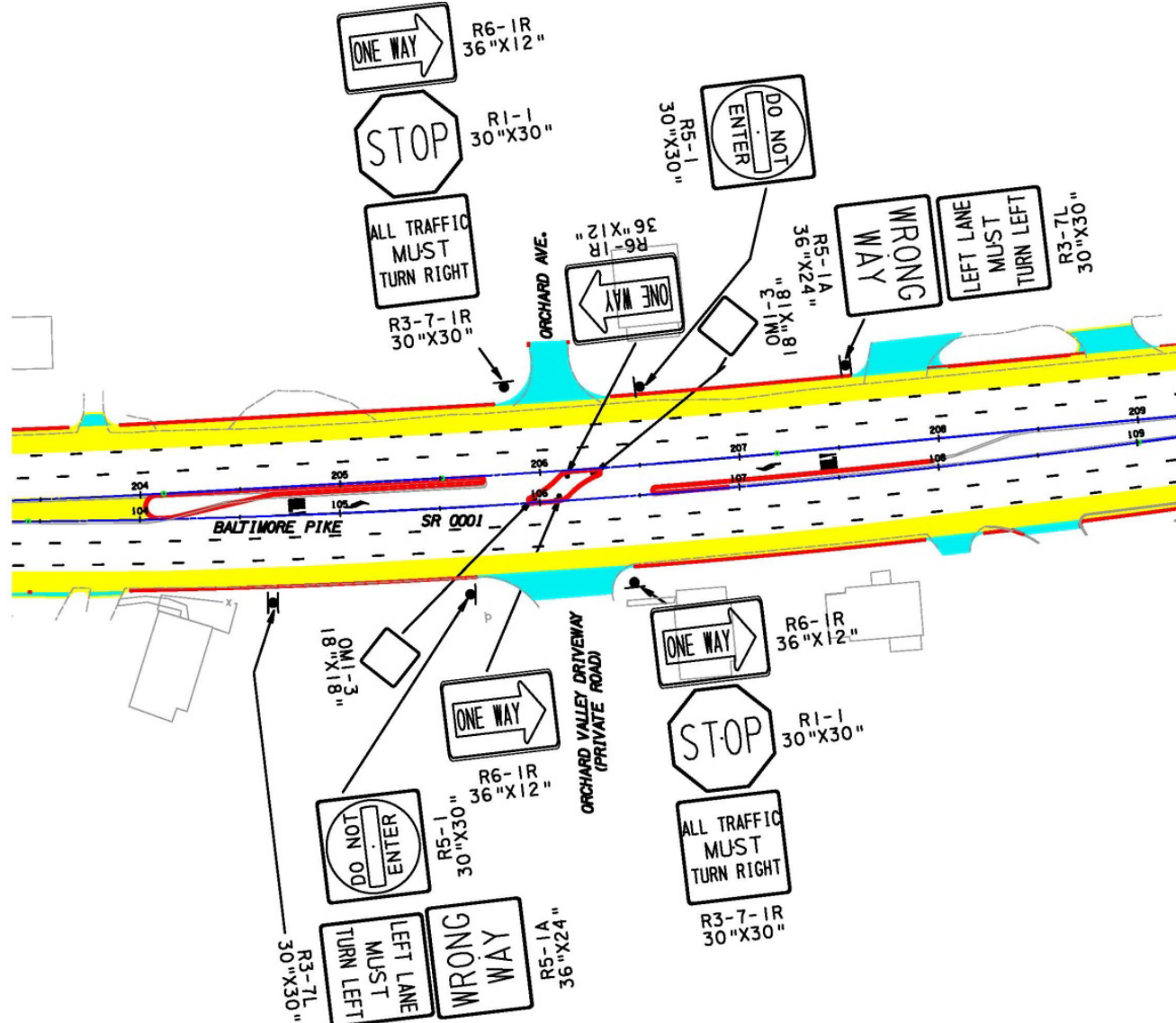
Bayard Road Intersection



US 1, Section H02

- Widen US 1 to three lanes throughout corridor from Longwood Overpass to Kennett Bypass split
- Add sidewalk along North side of US 1 from Schoolhouse Lane to Shopping Center signal
- Widen Bayard Road at CVS to allow for truck turns.
- **Prohibit Left Turns from Orchard Ave**
- Signal Modifications within corridor

US 1, Section H02 Orchard Lane



US 1, Section H02

- Widen US 1 to three lanes throughout corridor from Longwood Overpass to Kennett Bypass split
- Add sidewalk along North side of US 1 from Schoolhouse Lane to Shopping Center signal
- Widen Bayard Road at CVS to allow for truck turns.
- Prohibit Left Turns from Orchard Ave
- **Signal Modifications within corridor**

US 1, Section H02

Signal Modifications

- **Greenwood Ave**
 - Replace one mast arm to allow for third through lane SB.
- **Bayard Road**
 - Replace one mast arm to allow for widened area at CVS.
- **Shopping Centers**
 - Provide Modified ADA ramps and upgrade signals as needed to accommodate ramps.
- **Onix Drive**
 - Replace one mast arm to allow for third through lane NB.
 - Provide Modified ADA ramps on north side (SB) and upgrade signals as needed to accommodate ramps.
- **Schoolhouse Road**
 - Replace one mast arm to allow for third through lane NB.

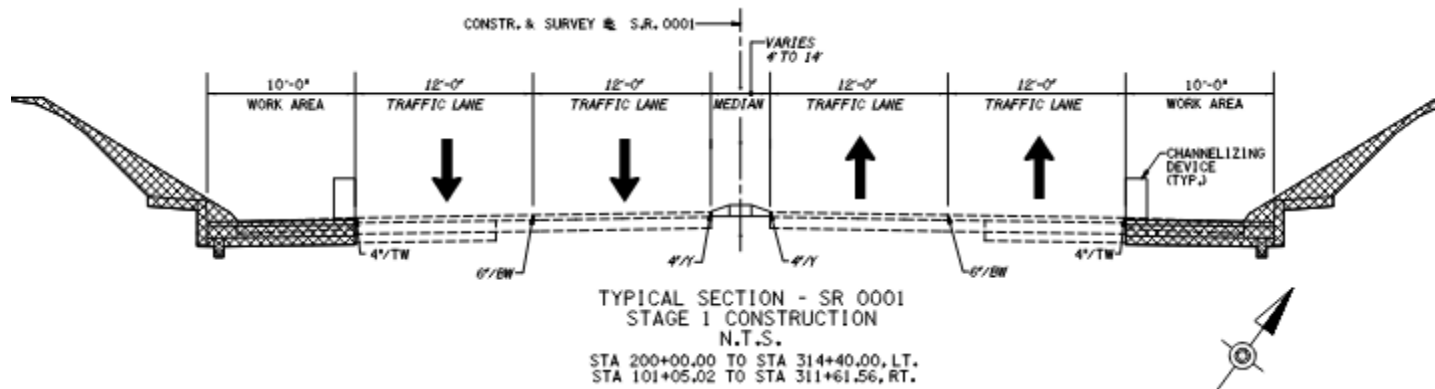
US 1, Section H02

Signal Modifications (cont'd)

- **Provide Closed Loop Traffic Signal System**
- **Connect signals to Township Building at PA 82 and PA 926**
- **Add two CCTV cameras within corridor**

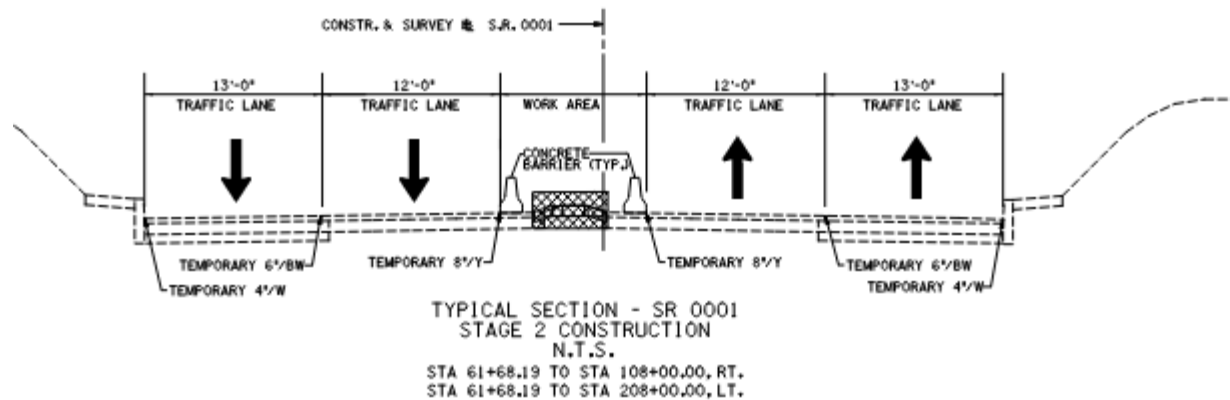
US 1, Section H02

- **Stage 1 traffic control.**
 - Widen and construct third lane.
 - Traffic stays in current layout. Lane shutdowns during non peak hours.



US 1, Section H02

- **Stage 2 traffic control.**
 - Reconstruct median from Bayard Road to Ladbrooke Lane
 - Construct island at Orchard Ave
 - Rebuild median



US 1, Section H02

- **Design – Complete Summer 2022**
- **Construction – Fall 2023**
 - Utility Relocations – Fall 2022 and Spring 2024
 - Roadway construction – Spring 2024 to Fall 2024

Questions

Josefina Brown
PennDOT Project Manager
610.205.6971

josebrown@pa.gov

And

Francis J. Eells, PE
610-783-3755
feells@gfnet.com